

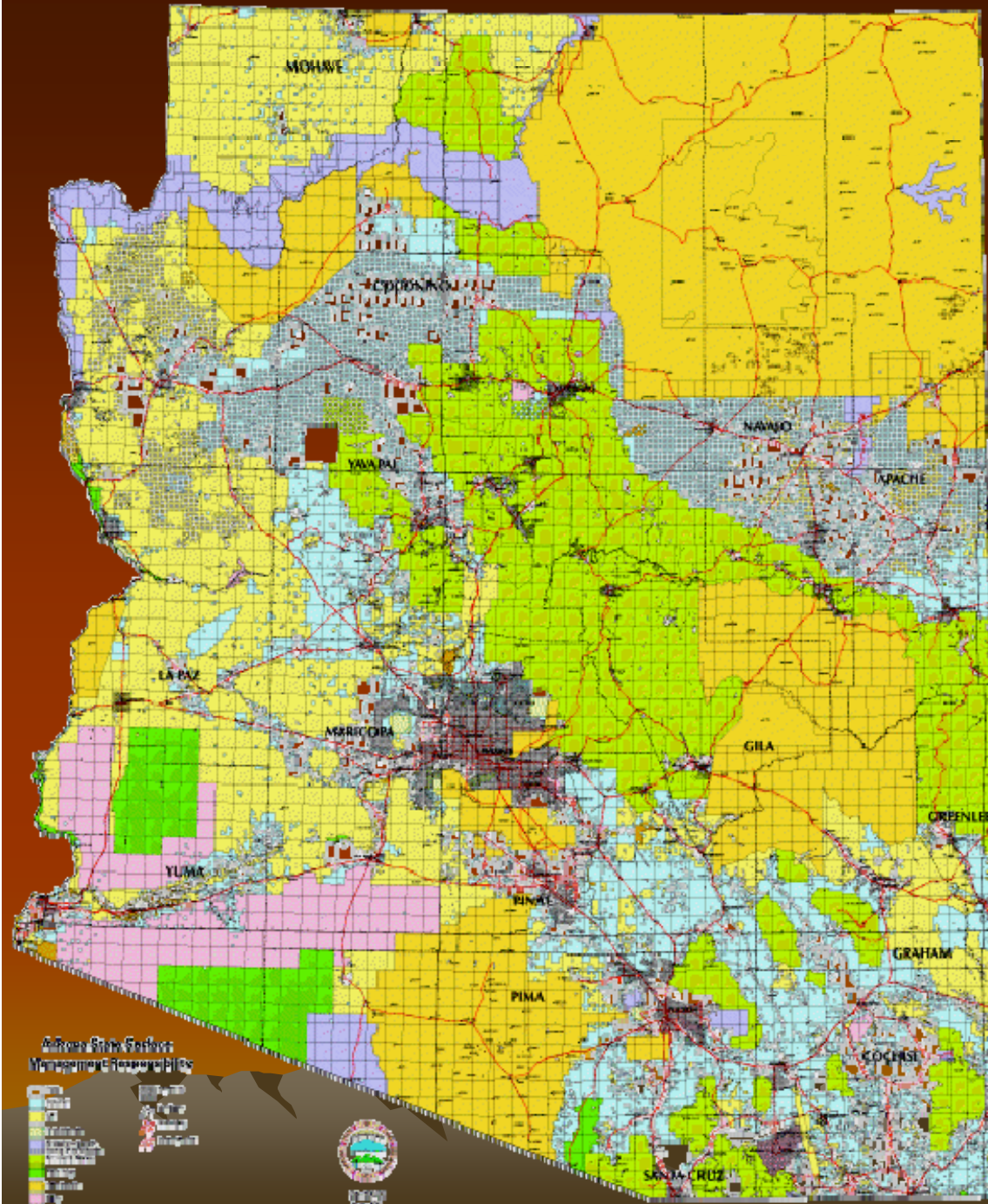
# ***Arizona Ranches***

**Mr. Tom A. Rolston, ARA**



## Ranch Categories

- Checkerboard Ranches of Northern Arizona
- Seasonal Forest Service Grazing Permits
- Yearlong Forest Service Grazing Permits
- BLM Allotments
- Southeastern Arizona Ranches
- Arizona Grazing Leases & Allotments
- Arizona Mixed Land Tenure Ranches



# Checkerboard Ranches

	Value Per Unit	Activity / Trend
Investment / Ranch / Rural 40-Acre Development	\$250 - \$1,000 / AC	Limited Availability / Increasing Demand
Investment / High-End Rural Development	\$900 - \$1,200 / AC	Limited Availability / Increasing Demand
Range Land Sold for Groundwater	\$400 - \$5,000 /AC	Limited Availability / Increasing Demand
Ranches w/40-acre subdivision & surface grazing	\$800 - \$2,200/AU	Increasing / Steady

# Seasonal Grazing Permits

Value per Unit	Activity / Trend
\$300 - \$2,820 / AU	Steady / Steady

# Yearlong Forest Grazing Permits

	Value per Unit	Activity / Trend
<b>TONTO NF</b>	<b>\$250 - \$5,000 / AU</b>	<b>Steady / Steady</b>
<b>PRESCOTT NF</b>	<b>\$300 - \$8,250 / AU</b>	<b>Steady / Steady</b>

# Yearlong Forest Grazing Permits

	Value per Unit	Activity / Trend
<b>COCONINO NF</b>	<b>\$1,750 - \$4,000 / AU</b>	<b>Slow / Steady</b>
<b>KAIBAB NF</b>	<b>\$350 - \$2,350 / AU</b>	<b>Slow / Steady</b>



# Yearlong Forest Grazing Permits

	Value per Unit	Activity / Trend
<b>APACHE / SITGREAVES NF</b>	<b>\$500 - \$1,500 / AU</b>	<b>Steady / Steady</b>
<b>CORONADO NF</b>	<b>\$1,500 - \$5,000 / AU</b>	<b>Increased / Steady</b>



# BLM Grazing Allotments

	Value per Unit	Activity / Trend
<b>WESTERN AZ</b>	<b>\$500 - \$6,000 / AU</b>	<b>Steady / Steady</b>
<b>SAFFORD AREA</b>	<b>\$770 - \$6,700 / AU</b>	<b>Steady / Steady</b>



# Southeastern Arizona Ranches

	Value per Unit	Activity / Trend
<b>INVESTMENT RANCHES OVER 40% DEEDED</b>	<b>\$425 - \$2,000 / AC</b>	<b>Slowed / Plateaued</b>
<b>INVESTMENT RANCHES UNDER 40% DEEDED</b>	<b>\$2,500 - \$16,000 / AU</b>	<b>Slowed / Steady</b>
<b>INVESTMENT / OPEN SPACE</b>	<b>\$1,900 - \$4,950 / AC</b>	<b>Pima County Active</b>
<b>RANGELAND / DEVELOPMENT</b>	<b>\$300 - \$5,000 / AC</b>	<b>Slowed / Plateaued</b>



# Arizona Grazing Leases / Allotments

Type	Value per Unit	Activity / Trend
100% State Lease	\$1,000 - \$1,400 / AU	Steady / Steady
100% BLM Allotment	\$1,000 - \$1,350 / AU	Steady / Steady
100% Forest Allotment	\$125 - \$1,000 / AU	Increasing / Steady
100% Seasonal Forest Allotment	\$350 - \$500 / AU	Steady / Steady

# MIXED LAND TENURE

Type	Value per Unit	Activity / Trend
Mixed Land Tenure	\$1,500 - \$3,950 / AU	Steady / Steady

