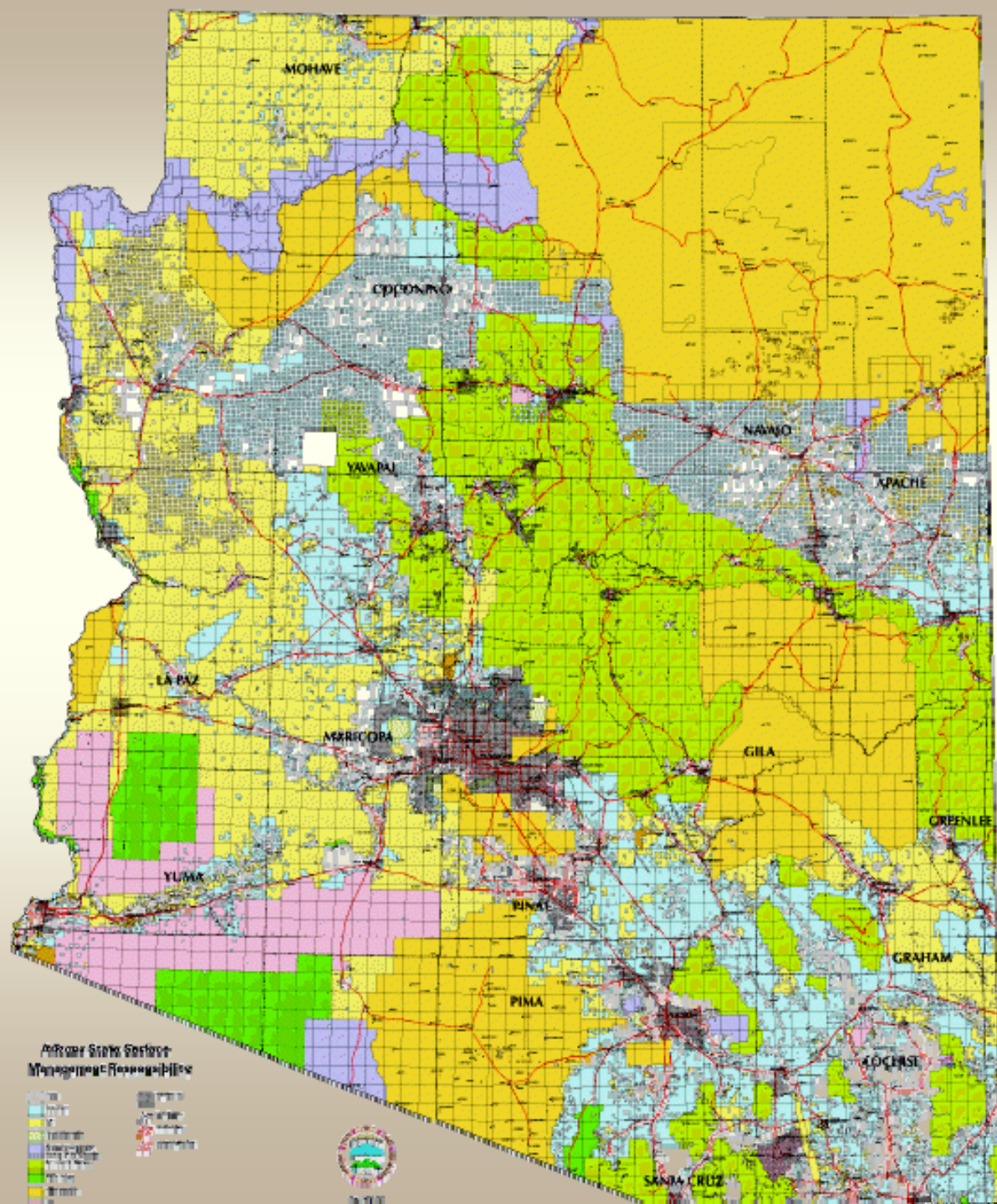


Yuma County

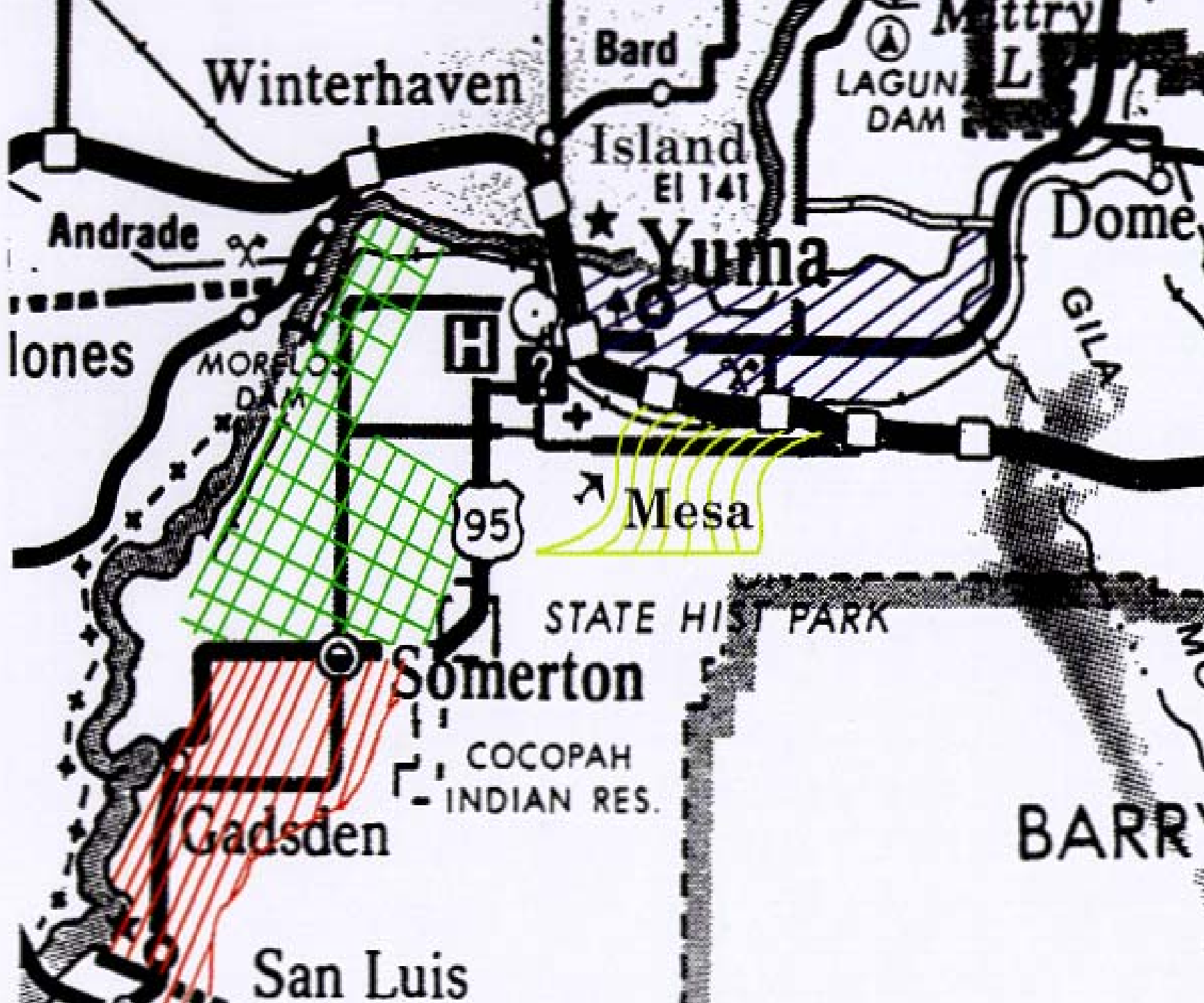




Air Quality Service Areas Management Responsibilities

- Flagstaff
- Phoenix
- Tucson
- Maricopa
- Yuma
- Pinal
- Santa Cruz
- Other designated areas
- Other designated areas
- Interstate
- State Route
- County Route





Yuma County

North Yuma Valley

Value Per Acre	Activity Trend	Rent Range	Activity Trend
\$10,000- \$15,000	Active	\$500 - \$700	Upward

South Yuma Valley

Value Per Acre	Activity Trend	Rent Range	Activity Trend
\$7,500- \$10,500	Active	\$400 - \$550	Upward

Water Cost: \$62/AF for 5 acre feet

Additional Water \$12.40 AF

Yuma County

North & South Gila Valleys

Value Per Acre	Activity Trend	Rent Range	Activity Trend
\$10,000- \$15,000	Limited Availability	\$500 - \$700	Steady to Increasing

Water Cost:

North Gila: \$26.00/Acre - 5 AF

South Gila: \$26.00/acre - 5 AF

Yuma County

Wellton-Mohawk

Value Per Acre	Activity Trend	Rent Range	Activity Trend
\$4,500- \$11,400	Upward	\$275 - \$600	Steady to Upward

Water Cost: \$60.60/acre -

4 AF in the Valley

5 AF on the Mesa

Yuma County

Bard, California

Value Per Acre	Activity Trend	Rent Range	Activity Trend
\$7,000- \$10,000	Active Limited Availability	\$400 - \$600	Steady to Increasing

Water Cost: \$41.00/AF for 5-8 acre feet

Additional \$9.50/AF

Yuma County

Dates

Value Per Acre	Activity Trend	Rent Range	Activity Trend
\$30,000- \$35,000	Limited Acreage, Increasing	\$3,600 - \$4,000	Upward