

# SPRING AG FORUM



ASFMRA Members  
are trained for  
Agriculture &  
Rural Land Management

Presented By:

American Society of

Farm Managers and

Rural Appraisers



Professionals  
specializing in  
Agriculture &  
Rural Land

# Where we work

- Irrigated Cropland

- Lettuce



# Where we work

- Irrigated Cropland

- Cilantro



# Where we work

- Permanent Plantings

- 4 year Citrus



# Where we work

- Permanent Plantings

- Dates



# Where we work

- Dairies



# Where we work

- New Construction & Agricultural Facilities



# Where we work

- Ranch Land



# Where we work

- National Forests



Our Thanks to the  
Following Corporations for  
their Financial Support



# Aztec Agricultural Group

(480) 777-9290

- Real Estate Appraisals, Sales & Property Management

Melvin Young

Clary Lusby

Mack McKeon



# Three Rivers Ag Investments

(602) 248-8335

- Real Estate Sales, Mortgage Brokerage

Jack Doughty

Erin Swayzee

Lance Knight

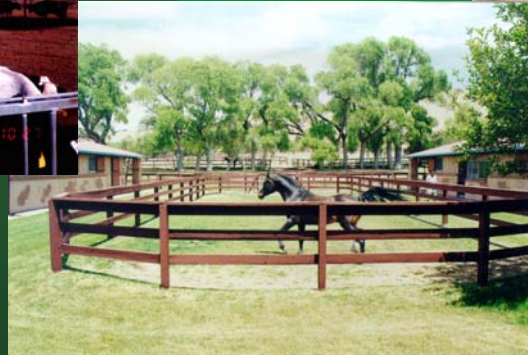
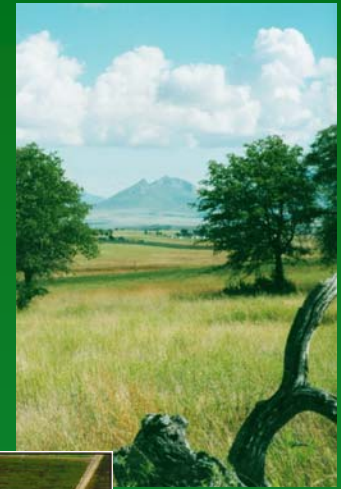
Dates



# Headquarters West, Ltd.

(602) 258-1647

Real Estate Sales & Appraisals



# Charlie Havranek

(602) 258-1647

- Real Estate Appraisal & Brokerage

- Dairy

- Nursery

- Farms

- Ranches



# Ganado Group, Inc.

(602) 248-9232

- Mortgage Brokerage
- Fee Appraisals
- Property Management
- Real Estate Sales

**Tom A. Rolston**

**Dave Clark**

**Jack Conovaloff**

**Gaye Rutan**

**Traegen Knight**

**Scott Halver**

**Carter Benton**



# Salmon, Lewis & Weldon, P.L.C.

Riney B. Salmon II, P.C.

M. Byron Lewis

John B. Weldon, Jr.

Stephen E. Crofton

Lisa M. McKnight

Mark A. McGinnis

James R. Huntwork

Karen S. Gaylord

Richard N. Morrison

Brenda W. Burnman

Ronnie P. Hawks

Attorneys at Law

(602) 801-9066



# Finley Appraisal Service, Inc.

(520) 384-0780

- Appraisal Services
  - Appraisals
  - Appraisal Reviews

• Mark Finley, ARA, RPRA



# Liesch Southwest, Inc.

(480) 421-0853

[www.liesch.com](http://www.liesch.com)



- Hydrogeologists
- Environmental Scientists
- Engineers

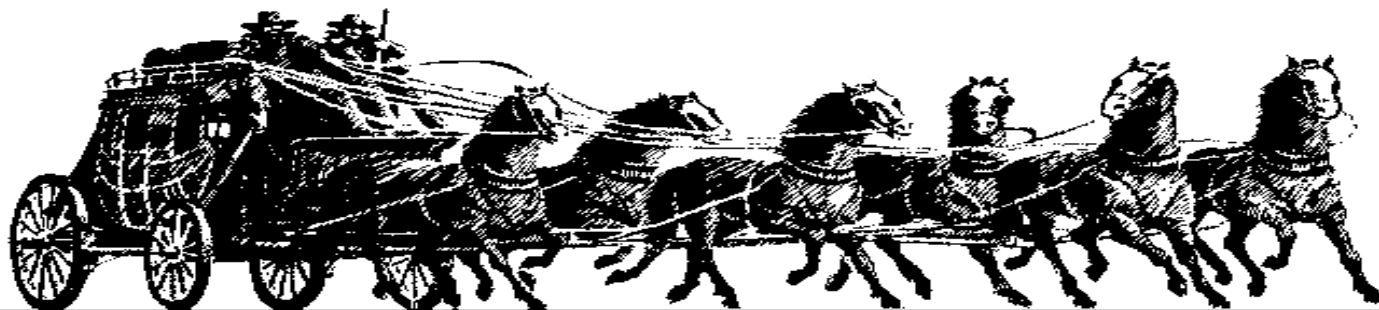


# Wells Fargo

Gene Peterson

(602) 378-6669

- Agricultural Lending



# WELLS FARGO



# Bank One

(602) 221-2905

- Agricultural Business Group

**Ken Van De Graaff**  
Vice President & Manager

